

# Summer Holiday Task

In this pack you will find the film posters for our set texts.

## **For each poster you need to annotate:**

- What genre clues you can see
- Does costume give us any clues about the characters?
- What tone / mood is suggested by the colours used?
- Body language – what is suggested by this?
- Props – do they give us any clues?
- Setting – what is suggested by this?

Don't worry about things being right or wrong – just think about what you can see and what it suggests / indicates / makes you think of etc.



WINNER (BEST FILM) WINNER (BRITISH FILM AWARDS) WINNER (GOLDEN GLOBE)

"AN ELECTRIC, STUNNING AND POWERFUL MOVIE, CAPPED WITH EXTRAORDINARY PERFORMANCES. THE BEST BRITISH FILM OF THE YEAR"

"DEEPLY IMPRESSIVE" ★★★★★

"THE DIRECTOR'S BEST FILM YET. THIS IS BRILLIANT"

# THIS IS ENGLAND

A Film by Shane Meadows

SUMMER 1983. A TIME TO STAND OUT FROM THE CROWD



"Heartwarming, Funny, Beautifully Performed...  
A Total Original"

DEADLINE



VIGGO MORTENSEN

# CAPTAIN FANTASTIC



ENTERTAINMENT ONE PRESENTS A SHOWBANG PRODUCTION AN ELECTRIC CITY ENTERTAINMENT PRODUCTION A FILM BY MATT ROSS VIGGO MORTENSEN "CAPTAIN FANTASTIC" FRANK LANGELLA with HARBOY KAHN and STEVE ZEMO  
\*\*PILARINA BALACATHY\*\* \*\*JESSIE'S BOURNABAS\*\* \*\*RALPH SOMERS\*\* \*\*BOB CLOUTREY HOFFMAN\*\* \*\*JOSEPH KINGS\*\* \*\*MICHAEL BARNES\*\* \*\*STEPHANE FORTLAME\*\* \*\*SAMANTHA RUSTEMAN\*\* \*\*CRISTAL PINOEL\*\* \*\*LOUISE ROUGE\*\*  
\*\*JACK HALLI HANNAH\*\* \*\*DELANA DAUBWIN\*\* \*\*CHRISTIAN BARRAL\*\* \*\*MIRVICA LEVINSON\*\* \*\*PERINETTE HOTTIEL TAYLOR\*\* \*\*JANE PROCHER\*\* \*\*MICHAELE ROSS

IN CINEMAS SOON





OFFICIAL SELECTION  
FESTIVAL DE CANNES

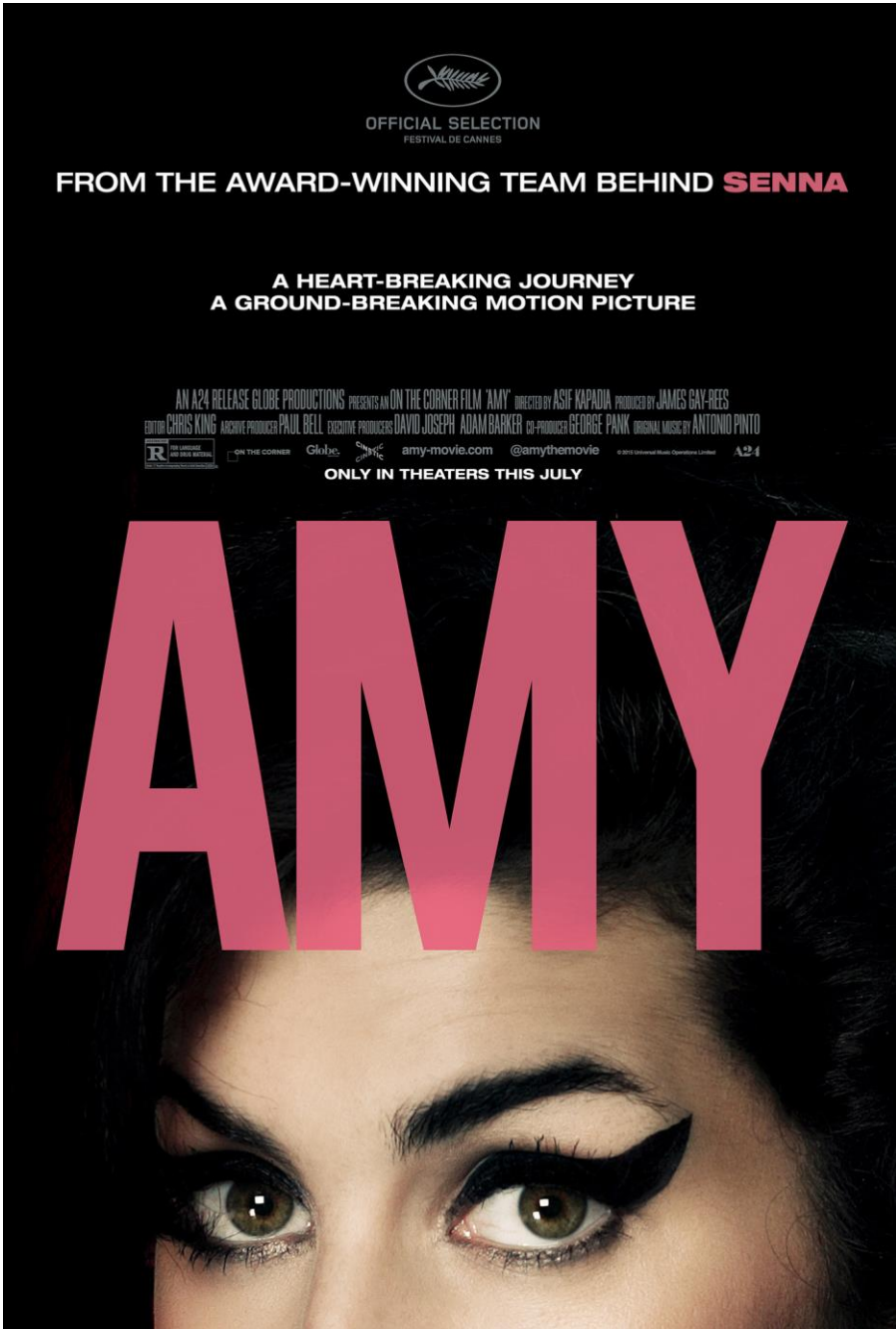
FROM THE AWARD-WINNING TEAM BEHIND **SENNA**

A HEART-BREAKING JOURNEY  
A GROUND-BREAKING MOTION PICTURE

AN A24 RELEASE GLOBE PRODUCTIONS PRESENTS AN ON THE CORNER FILM "AMY" DIRECTED BY ASIF KAPADIA PRODUCED BY JAMES GAY-PEES  
EDITOR CHRIS KING ARCHIVE PRODUCER PAUL BELL EXECUTIVE PRODUCERS DAVID JOSEPH ADAM BARKER CO-PRODUCER GEORGE PANK ORIGINAL MUSIC BY ANTONIO PINTO  
 ON THE CORNER   amy-movie.com @amythemovie © 2015 Universal Music Operations Limited A24

ONLY IN THEATERS THIS JULY

# AMY



"BEAUTIFUL AND EXHILARATING... A FAIRY TALE FOR GROWN-UPS."

—Rohan Farah, *Chicago Sun-Times*

# PAN'S LABYRINTH

OFFICIAL SELECTION  
CANNES FILM FESTIVAL  
2006

OFFICIAL SELECTION  
TORONTO INTERNATIONAL FILM FESTIVAL  
2006

OFFICIAL SELECTION  
NEW YORK FILM FESTIVAL  
2006

A NEW FILM FROM WRITER/DIRECTOR GUILLERMO DEL TORO

PICTUREHOUSE AND TELECINCO PRESENT A PRODUCTION OF ESTUDIOS PICASSO TEQUILA GANG ESPERANTO FILMOJ IN ASSOCIATION WITH CAFFEX, INC. A FILM BY GUILLERMO DEL TORO "PAN'S LABYRINTH"  
CAST: MARIBEL VERDU, IVANA BAQUERO, DOUG JONES, ARIADNA GIL, ALEX ANGULO, WILMAR GUILLERMO NAVARRO, IRENE VILAPLANA, EUGENIO CABELLO, JAVIER NA  
VIN HERNANDEZ, VICTOR ALBAZAN, BELEN ATENZA, ELENA MANRIQUE, EDUARDO GEL, BEATRIZ NAVARRO, ALFONSO CHARÓN, FRIDA TORRESBLANCO, ADAROA  
bunch  
R  
PANSLABYRINTH.COM  
©2006 GUILLERMO DEL TORO  
PICTURE

INNOCENCE HAS A POWER EVIL CANNOT IMAGINE

## Written task:

Select one of the film posters and turn your notes into a response to this question:

How does the film poster give the audience clues about the genre and characters of the film?